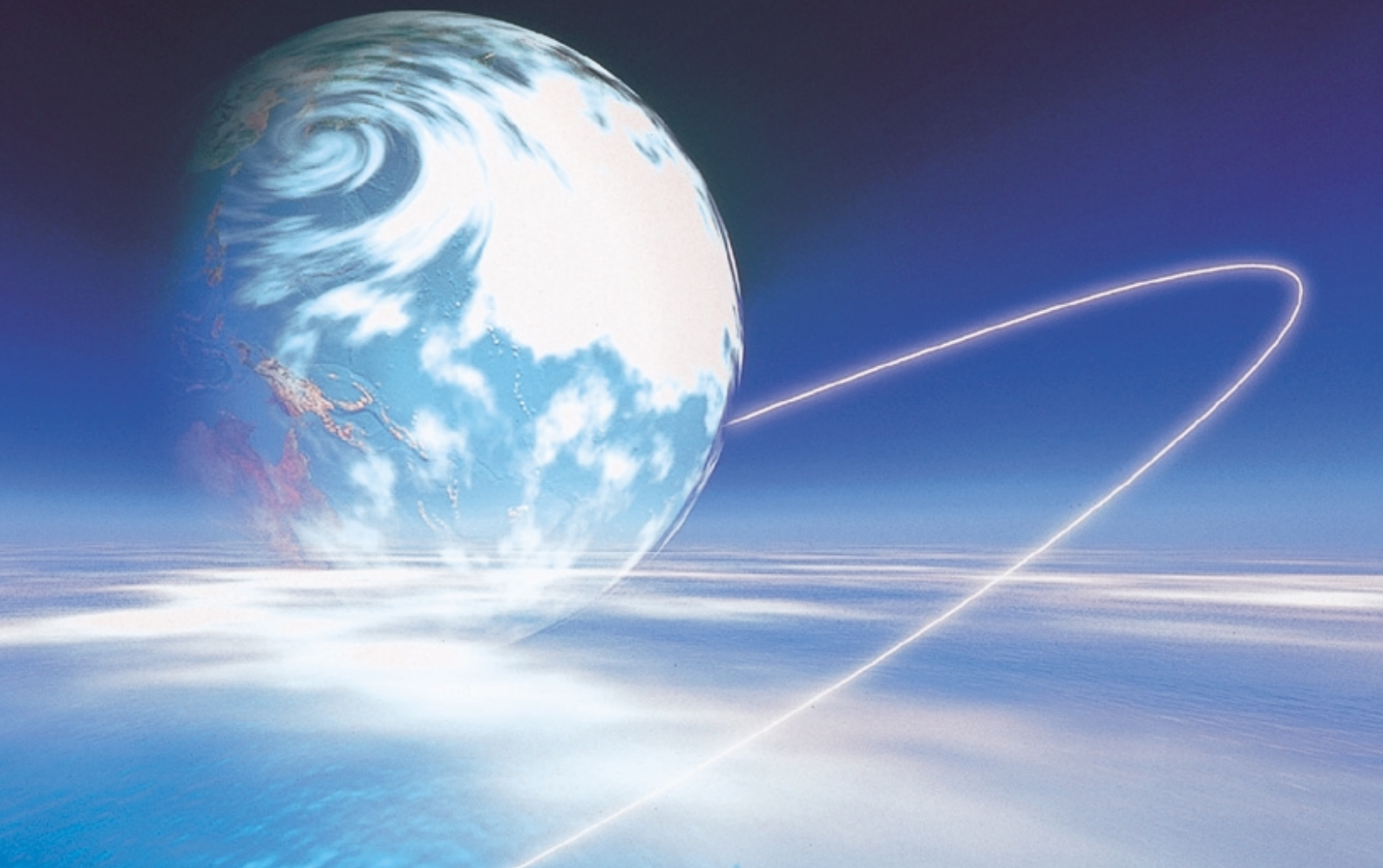


ESPEC

Communication Network System
for Environmental Testing Equipment
E-PILOT 21



CAT.NO.E00180-X403

The Second Stage Toward an Environmental Test Network E-PILOT 21

The E-PILOT 21 series of software solutions hold a myriad of possibilities to evolve data communication network system of environmental testing equipments to a new dimension.

The vision of E-PILOT 21 is a "solution net" of centralized control to specimen measurement and remote maintenance of test chambers — an open network system.

Rely on us to lead you to the future stage of environmental testing.

Environmental Testing Centralized Control Software

ERC-100M/200M

Windows Compatible

The ERC-100M/200M application software makes it easy to control all types of ESPEC test chambers with a computer. Use it to set operation parameters, monitor testing, create programs, and record data for up to 16 systems. The communication system of ERC-100M is compatible with ESPEC exclusive interface E-BUS. ERC-200M is compatible with common interface RS-485, allowing remote control of test operation.

* We also provide a full-customized central control system CMS-J30 (compatible with E-BUS) which enables control of up to 32 chambers.

Remote operation for easier testing

Set testing parameters or monitor operations while still in your office from a communication distance of up to 500 meters via E-BUS (ERC-100M)/RS485 (ERC-200M).

Automatic registration of connected test chambers

The functions of test chambers connected to the network are automatically recognized and registered in the system.

Improved operation

A mouse can perform all basic operations on the personal computer.

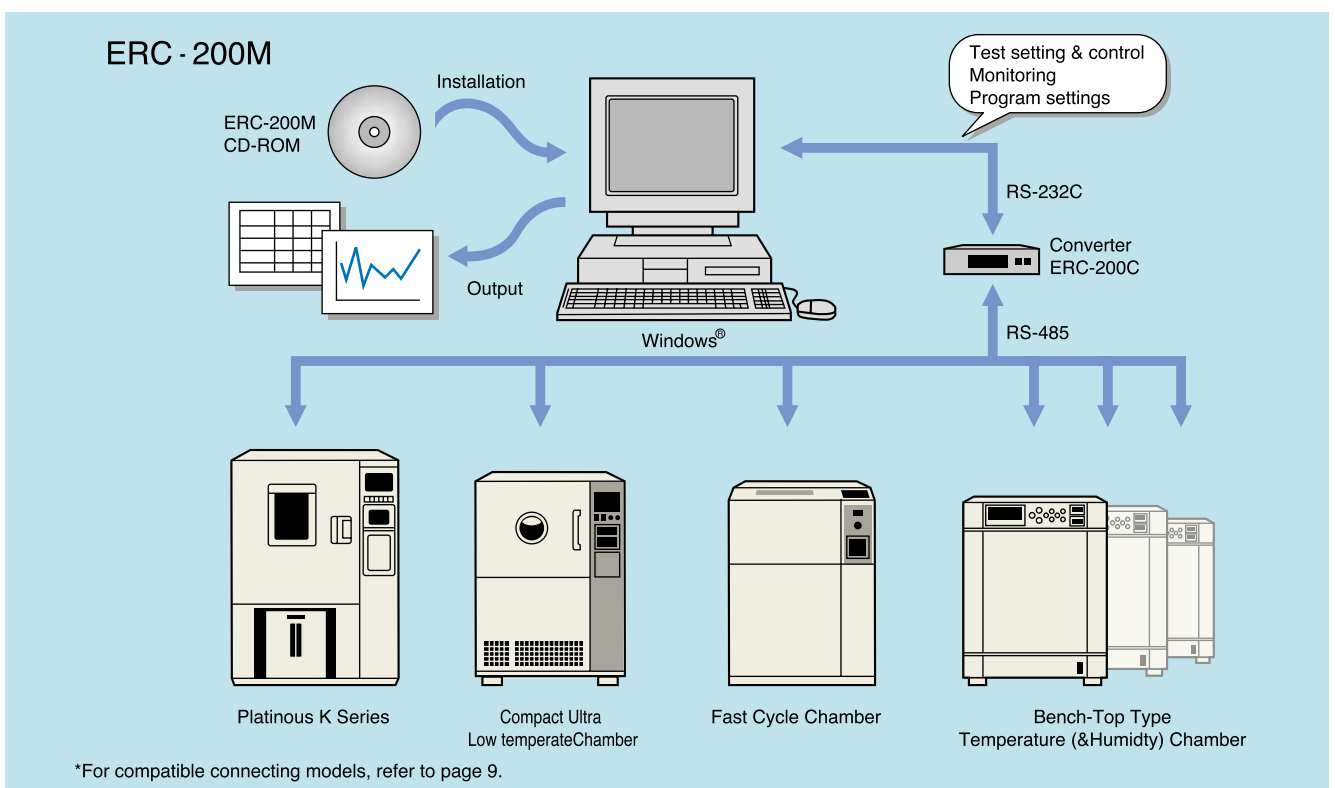
Easy control and data logging

The software can automatically record the test operation and save to a universal CSV (comma separated values) file.

This file can then be opened in spreadsheet software like Excel for analysis and graphing.

Achieve greater functionality

The ERC-100M/200M allows program operations to be run on test chambers with less-expensive single-setting controllers, thus saving initial cost.



Remote Device Software

ERC-100S

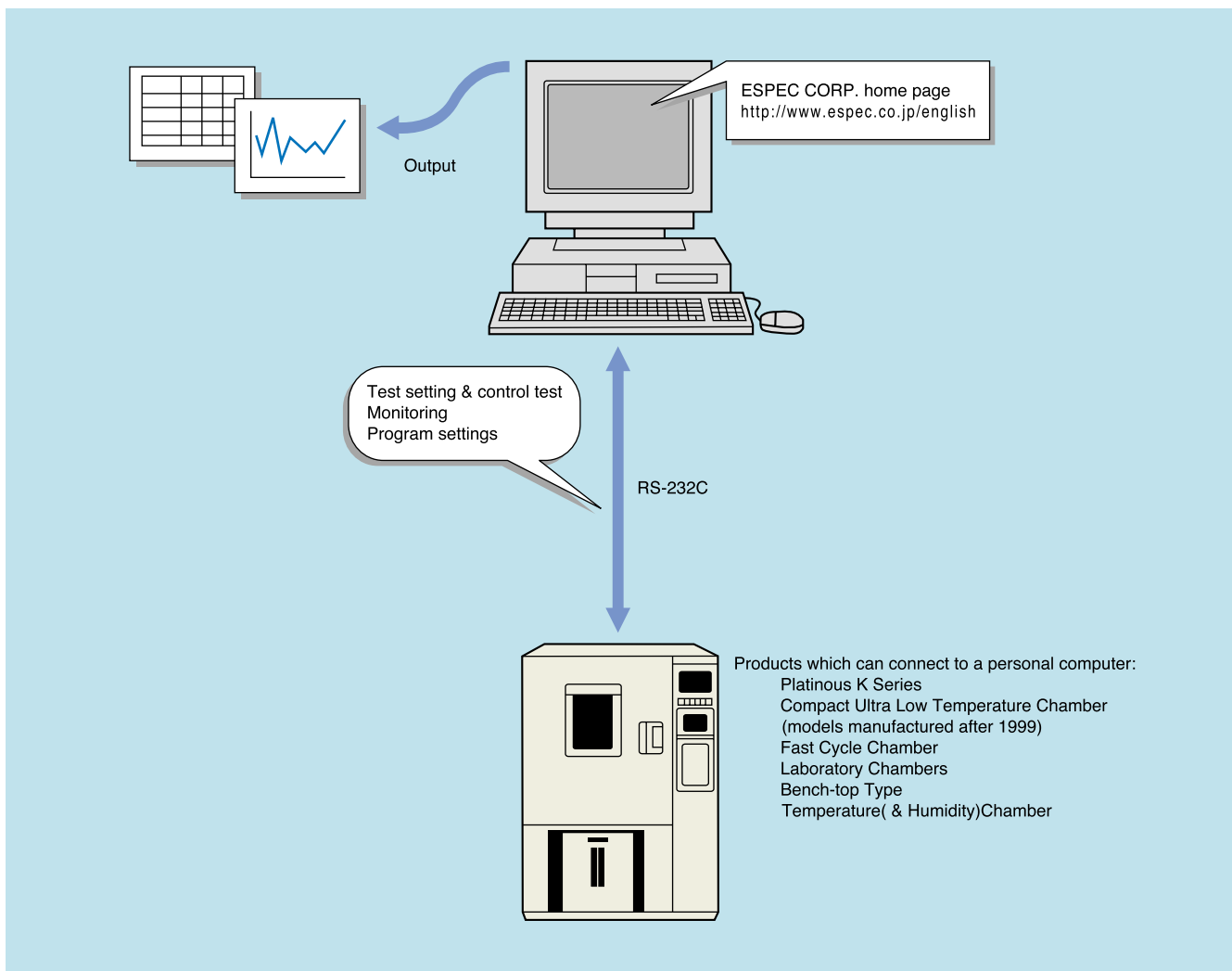
One-to-One Remote Device System
The ERC-100S Remote Device Software provides the functionality, but for only a single chamber. The software can be downloaded directly from our website for free.

● For our One-to-One users

If you are not ready to establish a network of test chambers, this software would be an ideal trial of the high-level capabilities of our ERC-100M/200M package.

● Download and trial

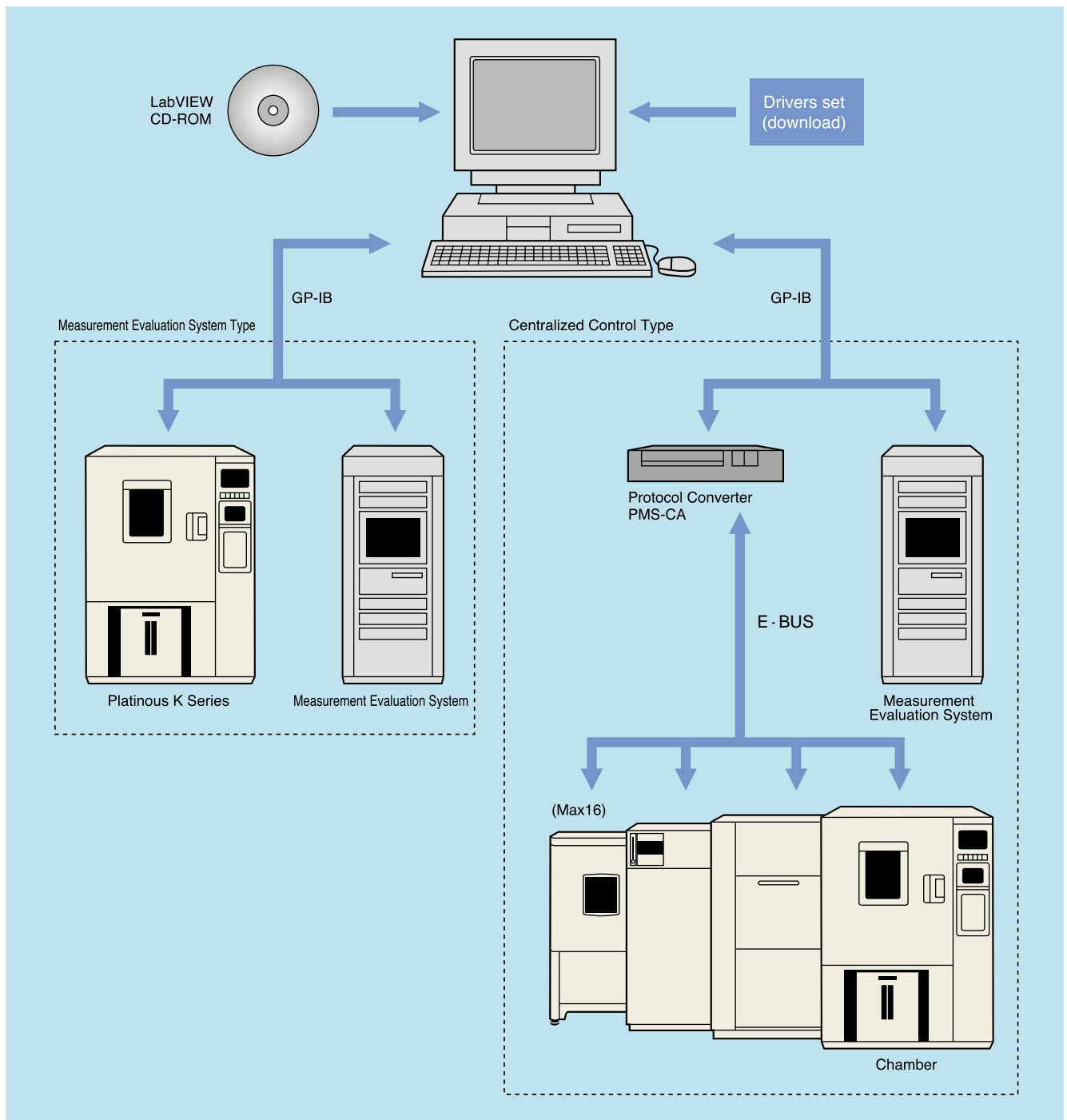
Access our home page (<http://www.espec.co.jp/english>) to download the ERC-100S Remote Device Software and see what it can do for you.



Drivers for Measurement Software

For customers using LabVIEW mode by National Instruments Corporation ——— We support automation of environmental testing by providing operation drivers in conjunction with ESPEC equipment, thus enabling simultaneous operation of chamber and measurement evaluation.

- Drivers for connecting to test chambers
Drivers required to connect ESPEC products to a personal computer can be downloaded from our home page.

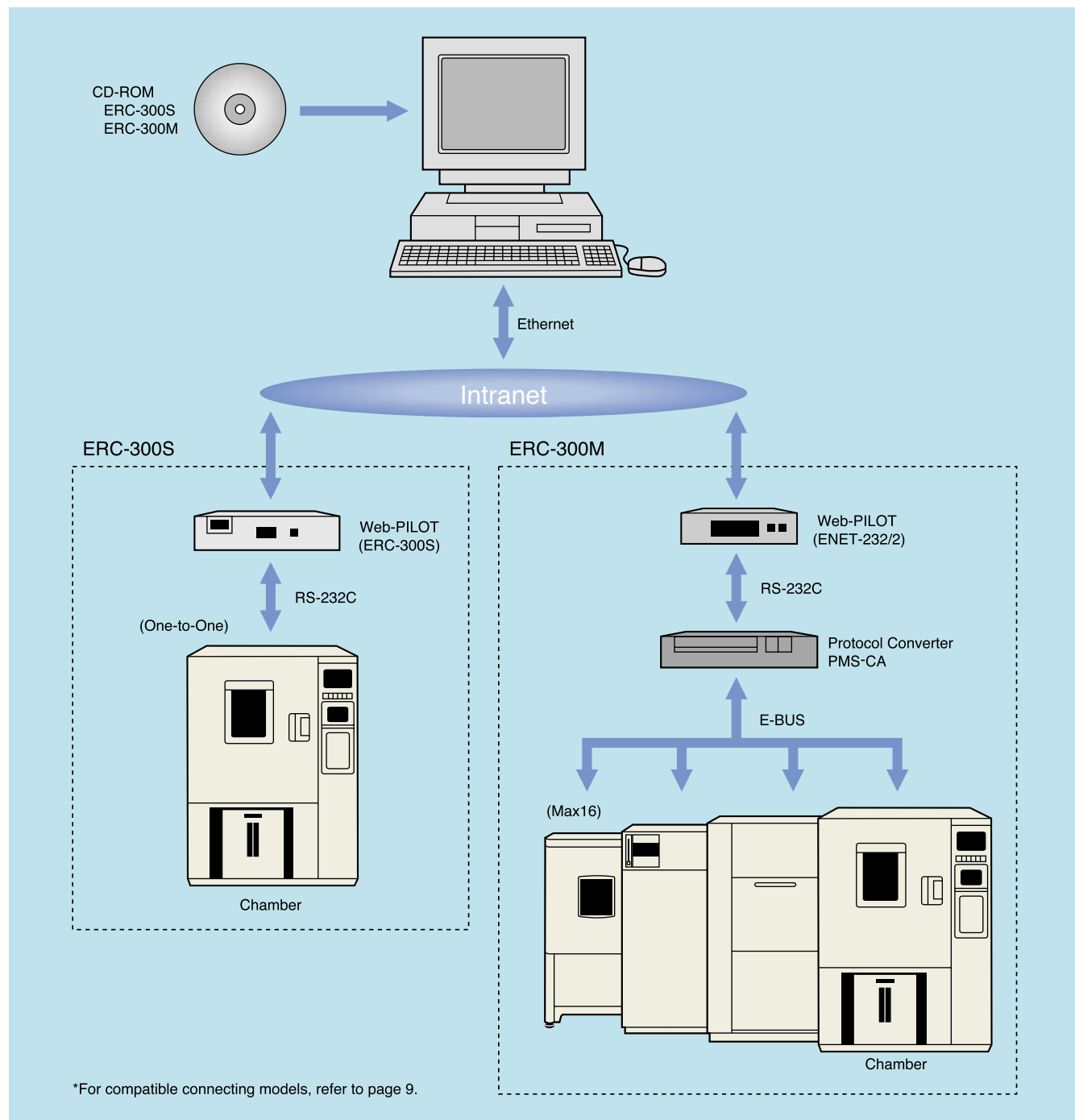


Web-PILOT

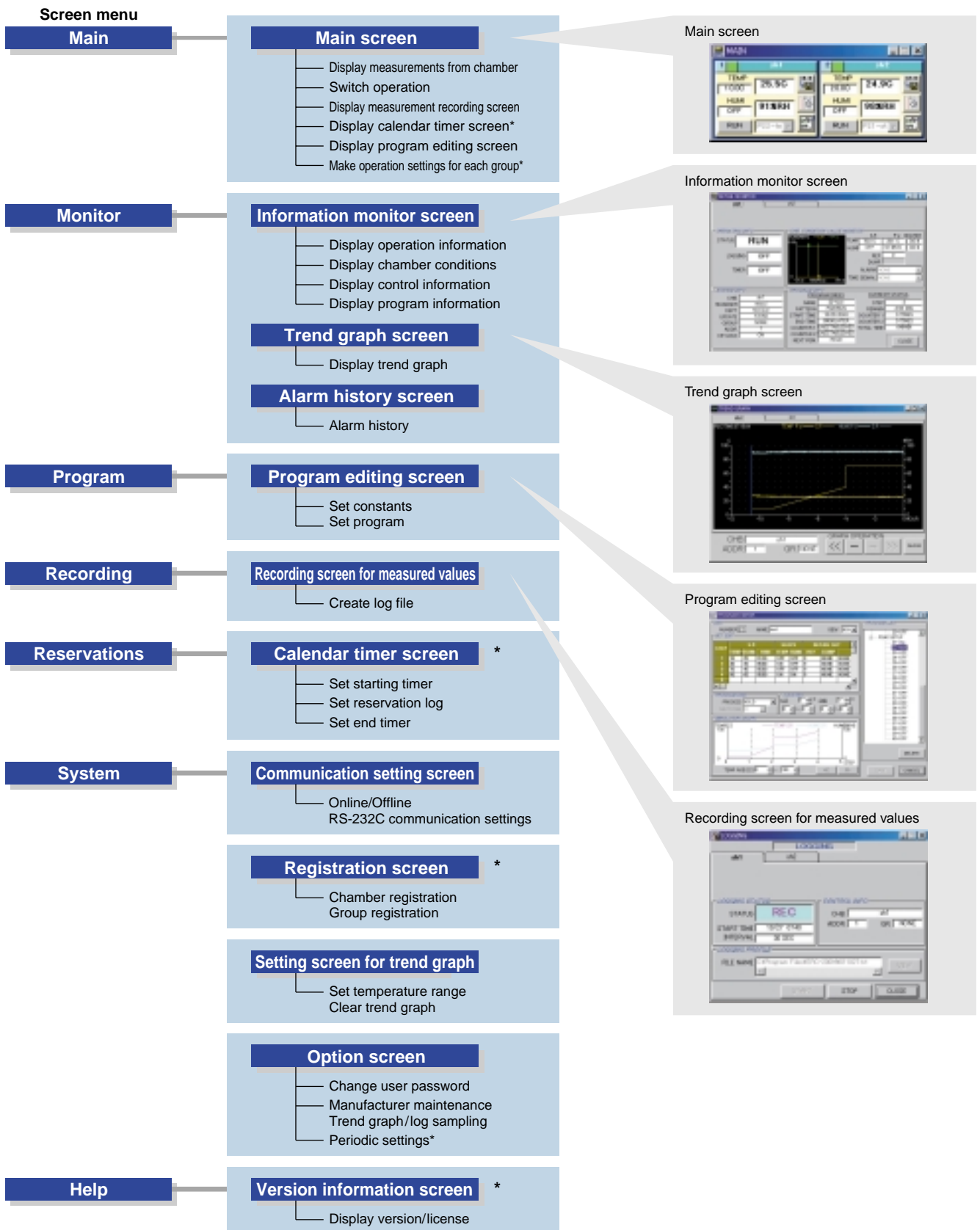
ERC-300S/300M

Set up a Web-PILOT site with an Ethernet (intranet) and E-BUS to allow monitoring of up to 16 chambers through a Windows PC. ERC-300M

- Monitor settings and operation of your chambers from a PC while sitting in your office.



Setting and Monitoring Function System ERC-100M / 200M



*Function is not available with ERC-100S

Network Comparisons

Type	ERC-100S	ERC-100M	ERC-200M
Software	Download (Free)	CD-ROM (For Value)	CD-ROM (For Value)
Number of chambers supported	1	16	16
Configuration			
Required hardware	PC communication port (RS-232C) RS-232C straight cable Test Chamber communication port (RS-232C)	PC communication port (RS-232C) RS-232C straight cable Protocol Converter (PMS-CA) E-BUS cable Test Chamber communication port (E-BUS)	PC communication port (RS-232C) RS-232C straight cable RS-485 Converter (ERC-200C) RS-485 cable

* An optional communication port should be equipped for some chambers.



ERC-300S	ERC-300M	Driver software for "LabVIEW" (measurement software)	
For Value	For Value	Commercial software (purchased by customer) + driver (Download for free)	
1	16	16 (3)	1
<p>For value ERC-300S CD-ROM</p> <p>Computer</p> <p>Ethernet</p> <p>Intranet</p> <p>Web-PILOT (ERC-300S)</p> <p>RS-232C</p> <p>Chamber</p>	<p>For value ERC-300M CD-ROM</p> <p>Computer</p> <p>Ethernet</p> <p>Intranet</p> <p>Web-PILOT (ENET-232/2)</p> <p>RS-232C</p> <p>Protocol Converter PMS-CA</p> <p>E-BUS</p> <p>Chamber</p>	<p>Free Driver</p> <p>Computer GP-IB board</p> <p>GP-IB</p> <p>Measurement Evaluation System</p> <p>Protocol Converter PMS-CA/CG</p> <p>E-BUS</p> <p>Chamber</p>	<p>Free Driver</p> <p>Computer GP-IB board</p> <p>GP-IB</p> <p>Measurement Evaluation System</p> <p>Platinous K Series</p>
PC communication port (Ethernet) LAN cable RS-232C straight cable Test Chamber communication port (RS-232C)	PC communication port (Ethernet) LAN cable RS-232C straight cable Protocol Converter (PMS-CA) E-BUS cable Test Chamber communication port (E-BUS)	GP-IB board (National Instruments Corp.) GP-IB cable Protocol Converter (PMS-CA/PMS-CG) E-BUS cable Test Chamber communication port (E-BUS)	GP-IB board (National Instruments Corp.) GP-IB cable Test Chamber communication port (GP-IB)

ERC-Compatible Models

Products	Connection				
	ERC-100M	ERC-200M	ERC-300M	ERC-100S	ERC-300S
Platinous K Series					
Platinous S Series		—		—	—
Platinous F Series		—		—	—
Platinous ESU, ESZ, ESL, ESX Series		*1			
Platinum ENU, ENZ, ENL, ENX Series		*1			—
Platinous SET(H) Series		*1			
Platinous GR, GL, GSL Series		*1			
Bench-Top Type Temperature (&Humidity) Chamber (models manufactured after Dec 10, 2001)					—
Compact Ultra Low Temperature Chamber T-instrumentation (models manufactured after 1999)					—
Compact Ultra Low Temperature Chamber P-instrumentation (models manufactured after 1999)		*1			
Climatic Test Chamber		—		—	—
Work Operation Type Low Temperature Chamber		—		—	—
Walk-in Type Temperature (&Humidity) Chamber P/T-instrumentation		*1		—	
M Series	—	*1	—	—	—
Air Supply Equipment		—		—	—
Temperature Chamber (Industrial Ovens)		—		—	—
Ultra-High Temperature Chamber		—		—	—
Temperature Chamber with Explosion Vent		—		—	—
Temperature Chamber with Rotating Specimen Rack		—		—	—
Anaerobic Temperature Chamber		—		—	—
Clean Oven (Type PV(H)C)		—		—	—
Vacuum Oven		—		—	—
Desk-Top Type High-Temp Chamber	*2	—	*2	—	—
Super Thermal Plate	—		—	—	—
Fast Cycle Chamber		*1			
Air to Air Thermal Shock Chamber TSA Series (models manufactured before Nov, 2003)	*2	—	*2	—	—
Air to Air Thermal Shock Chamber TSA Series (models manufactured after Jnu, 2003)	*2	—	*2	—	—
Air to Air Thermal Shock Chamber ETS Series	*2	—	*2	—	—
Air to Air Thermal Shock Chamber TSE Series (models manufactured after Dec 10, 2001)	*2	*1	*2	—	—
Liquid to Liquid Thermal Shock Chamber (models manufactured before May, 2003)	*2	—	*2	—	—
Liquid to Liquid Thermal Shock Chamber (models manufactured after Jnu, 2003)	*2	—	*2	—	—
High Accelerated Stress Test System (HAST Chamber)	*2	—	*2	—	—
Laboratory Chamber (models manufactured after 1999)		*1	*2		—

When using ERC-100M, chambers must have an E-BUS port.

When using ERC-100S, chambers must have an RS-232C port.

Choose from two versions for ERC-100S depending on the compatible models.

for setting parameters and monitoring.

for monitoring only.

may not be compatible with some models or may only be able to monitor.

For other compatible models and further information, please contact us.

*1 For further information, please contact us.

*2 Up to 16 units may be connected. However, no more than four Thermal Shock Chambers (TSA, TSE, TSB), Vacuum Ovens, and High Accelerated Stress Test Systems can be accepted.

Requirements

Model	ERC-100M		ERC-200M		ERC -300M		ERC -100S	ERC-300S
CPU	Pentium 200MHz	Pentium II 400MHz	Celeron 700MHz	Pentium III 800MHz	Celeron 700MHz	Pentium III 800MHz	Pentium 200MHz	Celeron 700MHz
Memory	Minimum 64MB							
Disk space required for installation. *1	Minimum 20MB						Minimum 15MB	Minimum 30MB
Communication port	COM1 or COM2 is required				Ethernet		COM1 or COM2 is required	Ethernet
Display	SVGA (800 x 600 dots) or better							
Hard disk capacity	Approx. 80KB/chamber is required to store recorded data(when recorded in 1-minute intervals for 24 hours) *4							
OS *2	Windows® 95(OSR2) Windows® 98(Second Edition) Windows NT®4.0(SP3) Windows® 2000 *5 Windows® XP *5		Windows® 95(OSR2) Windows® 98(Second Edition) Windows NT®4.0(SP3) Windows® 2000 *6 Windows® XP *6		Windows NT®4.0(SP5)		Windows® 95(OSR2) Windows® 98(Second Edition) Windows® ME Windows NT®4.0 (SP5) Windows® XP Windows® 2000 (SP2) *3	
Number of chambers supported	3	16	3	16	3	16	1	1

*1 Required capacity will vary depending on how the hard disk is formatted Therefore, it is recommended that extra space be allowed for storing data.

*2 vtdapi.vxd should be upgraded on Windows® 95 (OSR2 -).

*3 Windows® 98 (Second Edition) recommended. Internet Explorer 5.0 - is required.

*4 ERC-300S can be stored only on Windows® 95, Windows® 98, and Windows® Me.

*5 ERC-100M Ver 2.12 - can be used.

*6 ERC-200M Ver 1.13 - can be used.

ESPEC CORP. <http://www.espec.co.jp/english>

Head Office

3-5-6, Tenjinbashi, Kita-ku, Osaka 530-8550, Japan

Tel: 81-6-6358-4741 Fax: 81-6-6358-5500

Europe Office

Tel: 49-6196-77-99980 Fax: 49-6196-77-99985

ESPEC NORTH AMERICA, INC.

Tel: 1-616-896-6100 Fax: 1-616-896-6150

ESPEC EVALUATION & TEST SYSTEMS, INC.

Tel: 1-408-433-2295 Fax: 1-408-433-2296

ESPEC ENVIRONMENTAL EQUIPMENT (SHANGHAI) CO., LTD.

Head Office

Tel: 86-21-58303322 Fax: 86-21-58661781

BEIJING Rep. Office

Tel: 86-10-64627025 Fax: 86-10-64627036

GUANGZHOU Rep. Office

Tel: 86-20-83317826 Fax: 86-20-83317825

SHENZHEN Rep. Office

Tel: 86-755-83674422 Fax: 86-755-83674228

SUZHOU Rep. Office

Tel: 86-512-68664007 Fax: 86-512-68601994

ESPEC (MALAYSIA) SDN. BHD.

Tel: 60-3-89451377 Fax: 60-3-89451287



ISO 14001 (JIS Q 14001)

Environmental Management System Assessed and Registered

ESPEC GROUP ESPEC CORP.
 ESPEC ENGINEERING CORP.
 ESPEC KANSAI CORP.
 ESPEC ENVIRONMENTAL TEST
 TECHNOLOGY CENTER CORP.
 ESPEC BUSINESS CREATE CORP.

- Specifications are subject to change without notice due to design improvements.
- Windows® is a trademark or registered trademark of Microsoft Corporation in the U.S.A. and other countries. Other corporate names and trade names mentioned in this catalog are trademarks or registered trademarks.
- Printed on recycled paper.